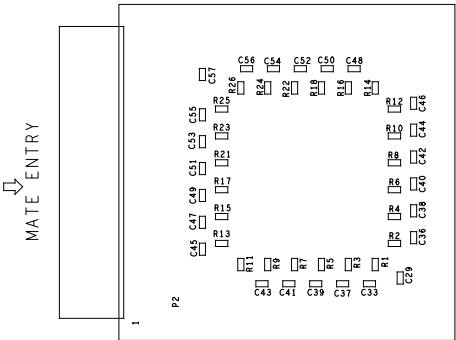


REVISIONS			
REV	DESCRIPTION	DATE	APPROVED
A	INITIAL RELEASE	06MAR23	M. SO
B	ECR-115089	11JUL23	M. SO

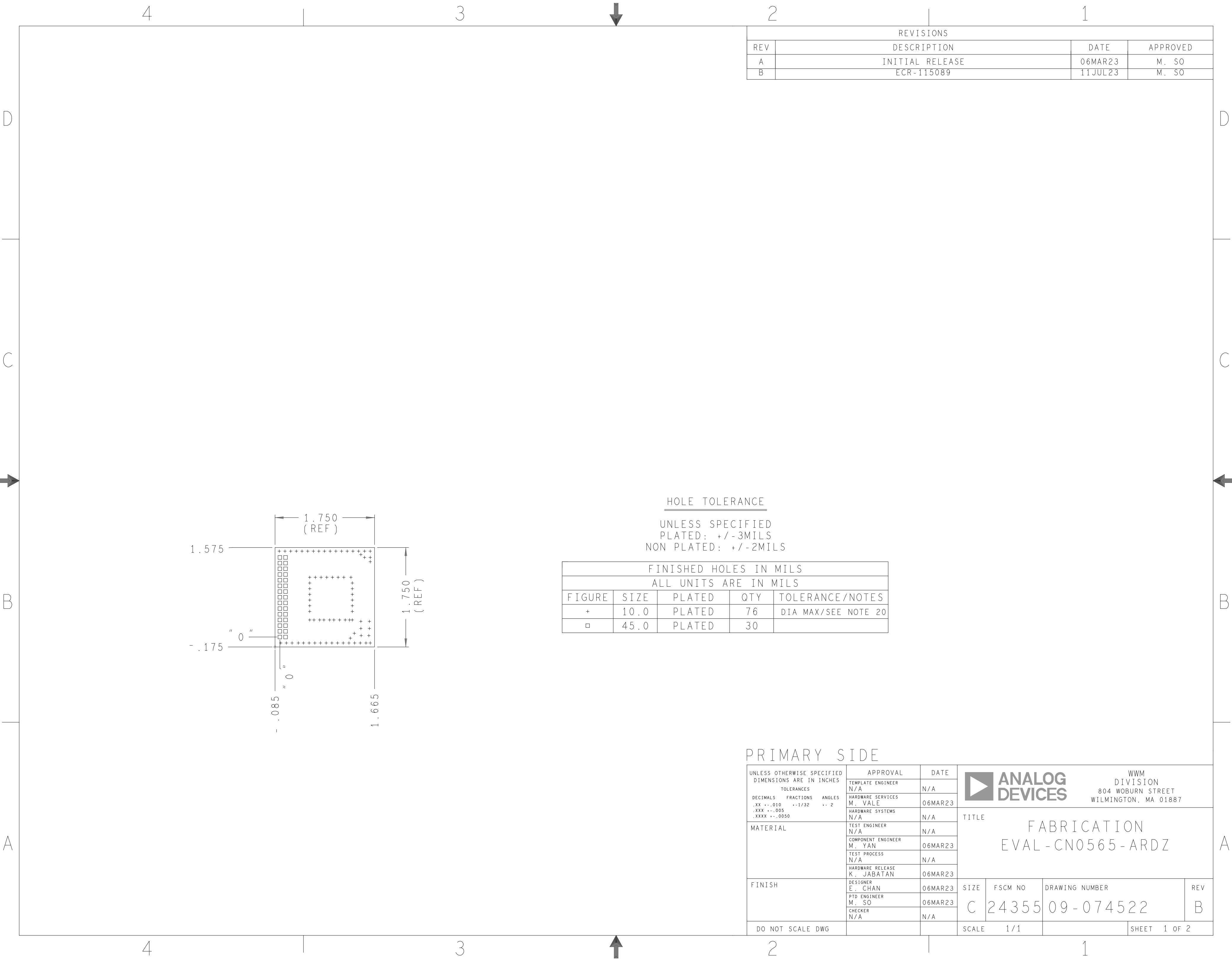
ASSEMBLY NOTES:

1. BOARD ACCEPTABILITY PER ANALOG DEVICES, INC. SPECIFICATION TST00119 (LATEST REVISION).
2. REPAIRS PER IPC-7711/21(LATEST REVISION) ARE ALLOWED.
3. REPAIRS ARE NOT ALLOWED IN SOLDERMASK FREE AREAS ON EITHER SIDE OF THE BOARD.
4. RoHS COMPLIANCE: ASSEMBLY VENDOR SHOULD ASSURE COMPLIANCE WITH LEAD-FREE AND RoHS PCB ASSEMBLY STANDARDS (EU RoHS DIRECTIVE 2002/95/EC).
5. BOARDS TO BE SHIPPED SINGULATED AFTER ASSEMBLY PROCESS.
6. SMOOTHEN EDGES AND FREE FROM BURS AFTER DEPANELIZATION PROCESS.
7. R5 TO R8,R13,R15,R18,R22 FOOTPRINT ARE ALL DNI
8. C29,C36 TO C38,C41 TO C46,C49 TO C51,C53,C54,C56,C57 FOOTPRINT ARE ALL DNI



PRIMARY SIDE

UNLESS OTHERWISE SPECIFIED DIMENSIONS ARE IN INCHES			APPROVAL		DATE		<div><div></div><div>ANALOG DEVICES</div></div> <div>WWM DIVISION 804 WOBURN STREET WILMINGTON, MA 01887</div>											
TOLERANCES			TEMPLATE ENGINEER N/A		N/A													
DECIMALS	FRACTIONS	ANGLES	HARDWARE SERVICES M. VALE		06MAR23		TITLE ASSEMBLY EVAL - CN0565 - ARDZ											
.XX -.010 .XXX -.005 .XXXX -.0050	--1/32 -- 2		HARDWARE SYSTEMS N/A		N/A													
MATERIAL			TEST ENGINEER N/A		N/A													
			COMPONENT ENGINEER M. YAN		06MAR23													
			TEST PROCESS N/A		N/A													
			HARDWARE RELEASE K. JABATAN		06MAR23													
			DESIGNER E. CHAN		06MAR23													
FINISH			PTD ENGINEER M. SO		06MAR23		SIZE C			FSCM NO 24355			DRAWING NUMBER 01 - 074522			REV B		
			CHECKER N/A		N/A													
DO NOT SCALE DWG							SCALE			1 / 1						SHEET 1 OF 1		




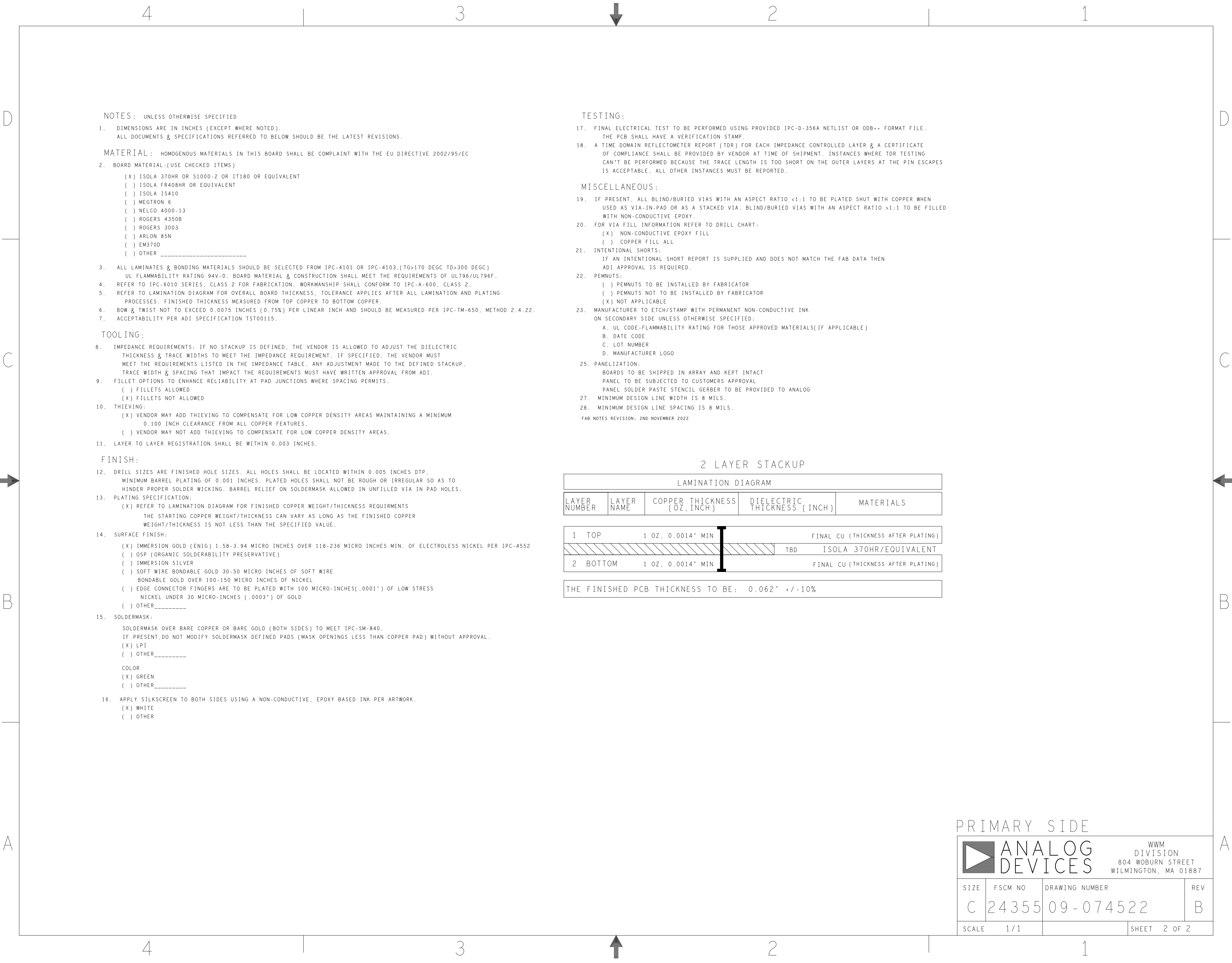
REVISIONS			
REV	DESCRIPTION	DATE	APPROVED
A	INITIAL RELEASE	06MAR23	M. SO
B	ECR-115089	11JUL23	M. SO

HOLE TOLERANCE
UNLESS SPECIFIED
PLATED: +/-3MILS
NON PLATED: +/-2MILS

FINISHED HOLES IN MILS				
ALL UNITS ARE IN MILS				
FIGURE	SIZE	PLATED	QTY	TOLERANCE/NOTES
+	10.0	PLATED	76	DIA MAX/SEE NOTE 20
□	45.0	PLATED	30	

PRIMARY SIDE

UNLESS OTHERWISE SPECIFIED DIMENSIONS ARE IN INCHES			APPROVAL		DATE		<div><div></div><div>ANALOG DEVICES</div></div> <div>WWM DIVISION 804 WOBURN STREET WILMINGTON, MA 01887</div>							
TOLERANCES			TEMPLATE ENGINEER N/A		N/A									
DECIMALS	FRACTIONS	ANGLES	HARDWARE SERVICES M. VALE		06MAR23									
.XX -.010	--1/32	-- 2	HARDWARE SYSTEMS N/A		N/A									
.XXX -.005							TITLE FABRICATION EVAL - CN0565 - ARDZ							
.XXXX -.0050														
MATERIAL			TEST ENGINEER N/A		N/A									
			COMPONENT ENGINEER M. YAN		06MAR23									
			TEST PROCESS N/A		N/A									
			HARDWARE RELEASE K. JABATAN		06MAR23									
FINISH			DESIGNER E. CHAN		06MAR23									
			PTD ENGINEER M. SO		06MAR23									
			CHECKER N/A		N/A		SIZE							
DO NOT SCALE DWG							SCALE		1 / 1		DRAWING NUMBER		REV	
											09 - 074522		B	
											SHEET		1 OF 2	



NOTES: UNLESS OTHERWISE SPECIFIED

1. DIMENSIONS ARE IN INCHES (EXCEPT WHERE NOTED).
ALL DOCUMENTS & SPECIFICATIONS REFERRED TO BELOW SHOULD BE THE LATEST REVISIONS.

MATERIAL: HOMOGENOUS MATERIALS IN THIS BOARD SHALL BE COMPLAINT WITH THE EU DIRECTIVE 2002/95/EC

2. BOARD MATERIAL:(USE CHECKED ITEMS)
- (X) ISOLA 370HR OR S1000-2 OR IT180 OR EQUIVALENT
 - () ISOLA FR408HR OR EQUIVALENT
 - () ISOLA IS410
 - () MEGTRON 6
 - () NELCO 4000-13
 - () ROGERS 4350B
 - () ROGERS 3003
 - () ARLON 85N
 - () EM370D
 - () OTHER _____
3. ALL LAMINATES & BONDING MATERIALS SHOULD BE SELECTED FROM IPC-4101 OR IPC-4103,(TG>170 DEGC TD>300 DEGC)
UL FLAMMABILITY RATING 94V-0. BOARD MATERIAL & CONSTRUCTION SHALL MEET THE REOUIREMENTS OF UL796/UL796F.
4. REFER TO IPC-6010 SERIES, CLASS 2 FOR FABRICATION. WORKMANSHIP SHALL CONFORM TO IPC-A-600, CLASS 2.
5. REFER TO LAMINATION DIAGRAM FOR OVERALL BOARD THICKNESS. TOLERANCE APPLIES AFTER ALL LAMINATION AND PLATING PROCESSES. FINISHED THICKNESS MEASURED FROM TOP COPPER TO BOTTOM COPPER.
6. BOW & TWIST NOT TO EXCEED 0.0075 INCHES (0.75%) PER LINEAR INCH AND SHOULD BE MEASURED PER IPC-TM-650, METHOD 2.4.22.
7. ACCEPTABILITY PER ADI SPECIFICATION TST00115.

TOOLING:

8. IMPEDANCE REQUIREMENTS: IF NO STACKUP IS DEFINED, THE VENDOR IS ALLOWED TO ADJUST THE DIELECTRIC THICKNESS & TRACE WIDTHS TO MEET THE IMPEDANCE REQUIREMENT. IF SPECIFIED, THE VENDOR MUST MEET THE REQUIREMENTS LISTED IN THE IMPEDANCE TABLE. ANY ADJUSTMENT MADE TO THE DEFINED STACKUP, TRACE WIDTH & SPACING THAT IMPACT THE REQUIREMENTS MUST HAVE WRITTEN APPROVAL FROM ADI.
9. FILLET OPTIONS TO ENHANCE RELIABILITY AT PAD JUNCTIONS WHERE SPACING PERMITS.
- () FILLETS ALLOWED
 - (X) FILLETS NOT ALLOWED
10. THIEVING:
- (X) VENDOR MAY ADD THIEVING TO COMPENSATE FOR LOW COPPER DENSITY AREAS MAINTAINING A MINIMUM 0.100 INCH CLEARANCE FROM ALL COPPER FEATURES.
 - () VENDOR MAY NOT ADD THIEVING TO COMPENSATE FOR LOW COPPER DENSITY AREAS.
11. LAYER TO LAYER REGISTRATION SHALL BE WITHIN 0.003 INCHES.

FINISH:

12. DRILL SIZES ARE FINISHED HOLE SIZES. ALL HOLES SHALL BE LOCATED WITHIN 0.005 INCHES DTP, MINIMUM BARREL PLATING OF 0.001 INCHES. PLATED HOLES SHALL NOT BE ROUGH OR IRREGULAR SO AS TO HINDER PROPER SOLDER WICKING. BARREL RELIEF ON SOLDERMASK ALLOWED IN UNFILLED VIA IN PAD HOLES.
13. PLATING SPECIFICATION:
- (X) REFER TO LAMINATION DIAGRAM FOR FINISHED COPPER WEIGHT/THICKNESS REQUIRMENTS
 - THE STARTING COPPER WEIGHT/THICKNESS CAN VARY AS LONG AS THE FINISHED COPPER WEIGHT/THICKNESS IS NOT LESS THAN THE SPECIFIED VALUE.
14. SURFACE FINISH:
- (X) IMMERSION GOLD (ENIG) 1.58-3.94 MICRO INCHES OVER 118-236 MICRO INCHES MIN. OF ELECTROLESS NICKEL PER IPC-4552
 - () OSP (ORGANIC SOLDERABILITY PRESERVATIVE)
 - () IMMERSION SILVER
 - () SOFT WIRE BONDABLE GOLD 30-50 MICRO INCHES OF SOFT WIRE
 - BONDABLE GOLD OVER 100-150 MICRO INCHES OF NICKEL
 - () EDGE CONNECTOR FINGERS ARE TO BE PLATED WITH 100 MICRO-INCHES(.0001") OF LOW STRESS NICKEL UNDER 30 MICRO-INCHES (.0003") OF GOLD
 - () OTHER_____
15. SOLDERMASK:
- SOLDERMASK OVER BARE COPPER OR BARE GOLD (BOTH SIDES) TO MEET IPC-SM-840.
- IF PRESENT,DO NOT MODIFY SOLDERMASK DEFINED PADS (MASK OPENINGS LESS THAN COPPER PAD) WITHOUT APPROVAL.
- (X) LPI
 - () OTHER_____
- COLOR
- (X) GREEN
 - () OTHER_____
16. APPLY SILKSCREEN TO BOTH SIDES USING A NON-CONDUCTIVE, EPOXY BASED INK PER ARTWORK.
- (X) WHITE
 - () OTHER

TESTING:

17. FINAL ELECTRICAL TEST TO BE PERFORMED USING PROVIDED IPC-D-356A NETLIST OR ODB++ FORMAT FILE. THE PCB SHALL HAVE A VERIFICATION STAMP.
18. A TIME DOMAIN REFLECTOMETER REPORT (TDR) FOR EACH IMPEDANCE CONTROLLED LAYER & A CERTIFICATE OF COMPLIANCE SHALL BE PROVIDED BY VENDOR AT TIME OF SHIPMENT. INSTANCES WHERE TDR TESTING CAN'T BE PERFORMED BECAUSE THE TRACE LENGTH IS TOO SHORT ON THE OUTER LAYERS AT THE PIN ESCAPES IS ACCEPTABLE, ALL OTHER INSTANCES MUST BE REPORTED.

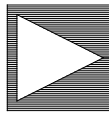
MISCELLANEOUS:

19. IF PRESENT, ALL BLIND/BURIED VIAS WITH AN ASPECT RATIO <1:1 TO BE PLATED SHUT WITH COPPER WHEN USED AS VIA-IN-PAD OR AS A STACKED VIA. BLIND/BURIED VIAS WITH AN ASPECT RATIO >1:1 TO BE FILLED WITH NON-CONDUCTIVE EPOXY.
20. FOR VIA FILL INFORMATION REFER TO DRILL CHART:
- (X) NON-CONDUCTIVE EPOXY FILL
 - () COPPER FILL ALL
21. INTENTIONAL SHORTS:
- IF AN INTENTIONAL SHORT REPORT IS SUPPLIED AND DOES NOT MATCH THE FAB DATA THEN ADI APPROVAL IS REQUIRED.
22. PEMNUTS:
- () PEMNUTS TO BE INSTALLED BY FABRICATOR
 - () PEMNUTS NOT TO BE INSTALLED BY FABRICATOR
 - (X) NOT APPLICABLE
23. MANUFACTURER TO ETCH/STAMP WITH PERMANENT NON-CONDUCTIVE INK ON SECONDARY SIDE UNLESS OTHERWISE SPECIFIED:
- A. UL CODE-FLAMMABILITY RATING FOR THOSE APPROVED MATERIALS(IF APPLICABLE)
 - B. DATE CODE
 - C. LOT NUMBER
 - D. MANUFACTURER LOGO
25. PANELIZATION:
- BOARDS TO BE SHIPPED IN ARRAY AND KEPT INTACT
- PANEL TO BE SUBJECTED TO CUSTOMERS APPROVAL
- PANEL SOLDER PASTE STENCIL GERBER TO BE PROVIDED TO ANALOG
27. MINIMUM DESIGN LINE WIDTH IS 8 MILS.
28. MINIMUM DESIGN LINE SPACING IS 8 MILS.
- FAB NOTES REVISION: 2ND NOVEMBER 2022

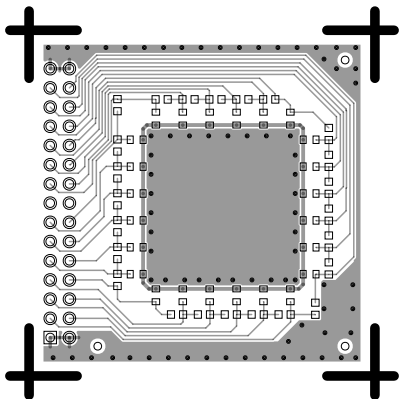
2 LAYER STACKUP

LAMINATION DIAGRAM				
LAYER NUMBER	LAYER NAME	COPPER THICKNESS (OZ, INCH)	DIELECTRIC THICKNESS (INCH)	MATERIALS
1	TOP	1 OZ, 0.0014" MIN	TBD	FINAL CU (THICKNESS AFTER PLATING)
				ISOLA 370HR/EQUIVALENT
2	BOTTOM	1 OZ, 0.0014" MIN		FINAL CU (THICKNESS AFTER PLATING)
THE FINISHED PCB THICKNESS TO BE: 0.062" +/-10%				

PRIMARY SIDE

	ANALOG DEVICES	WWM DIVISION 804 WOBURN STREET WILMINGTON, MA 01887	
SIZE	FSCM NO	DRAWING NUMBER	REV
C	24355	09-074522	B
SCALE	1/1	SHEET 2 OF 2	

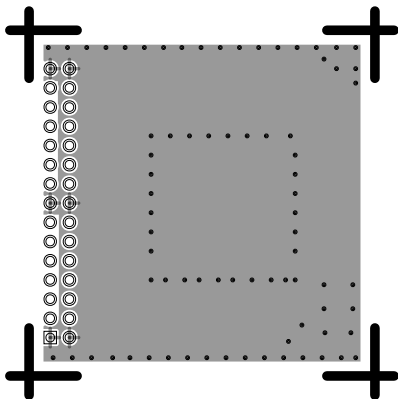
L1 PRIMARY
08-074522-01
REV B



L2 SECONDARY

08 - 074522-02

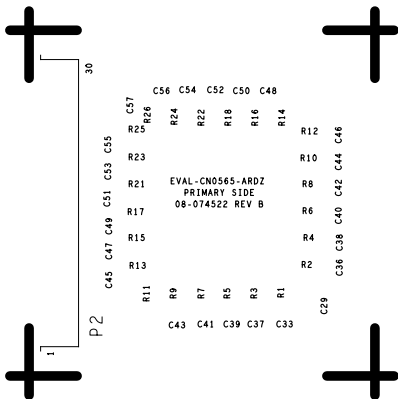
REV B



SILKSCREEN PRIMARY

08-074522-03

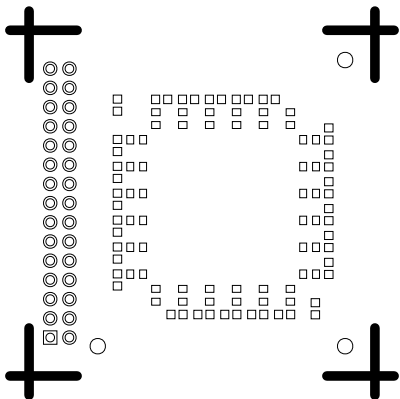
REV B



SOLDERMASK PRIMARY

08-074522-04

REV B



SILKSCREEN SECONDARY
08-074522-05
REV B



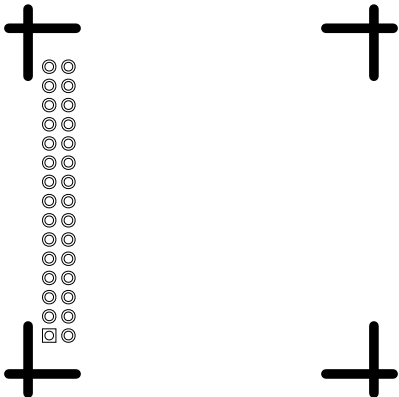
08-074522 REV B
SECONDARY SIDE



SOLDERMASK SECONDARY

08-074522-06

REV B



PASTEMASK PRIMARY

08-074522-07

REV B

